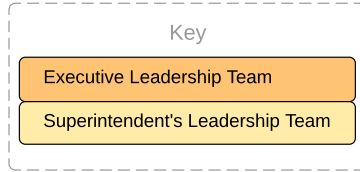




# 2020-21 PPS Leadership

Revised: September 9, 2020  
Subject to change



**Guadalupe Guerrero**  
Superintendent

**Cheryl Pitman**  
Confidential Executive Assistant (CEA)

**RACIAL EQUITY & SOCIAL JUSTICE**  
**Dani Ledezma**  
Senior Advisor to Superintendent

**RESEARCH, ASSESSMENT & ACCOUNTABILITY**  
**Dr. Russell Brown**  
Chief of System Performance

**Amy Liu**  
CEA

**Claire Hertz**  
Deputy Superintendent  
Business & Operations

**Liz Large**  
General Counsel  
(on contract)

**Stephanie Soden**  
Executive Chief of Staff

**Dr. Kregg Cuellar**  
Deputy Superintendent  
Instruction & School Communities

**Gail Warren**  
CEA

**Lisa Meurs**  
CEA

**Lidia Lopez Gamboa**  
CEA

**Judy Trapp**  
CEA

Risk Management  
Board Office, Government Relations, Complaint Coordinator

